

Replacement Insert Knife Instructions for 45° and 60° V-Groove

Amana Tool 45° #'s RC-1045, RC-1049 & RC-1145

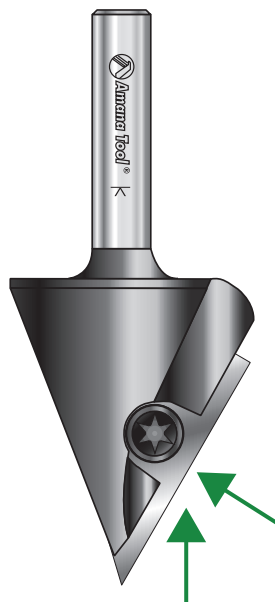
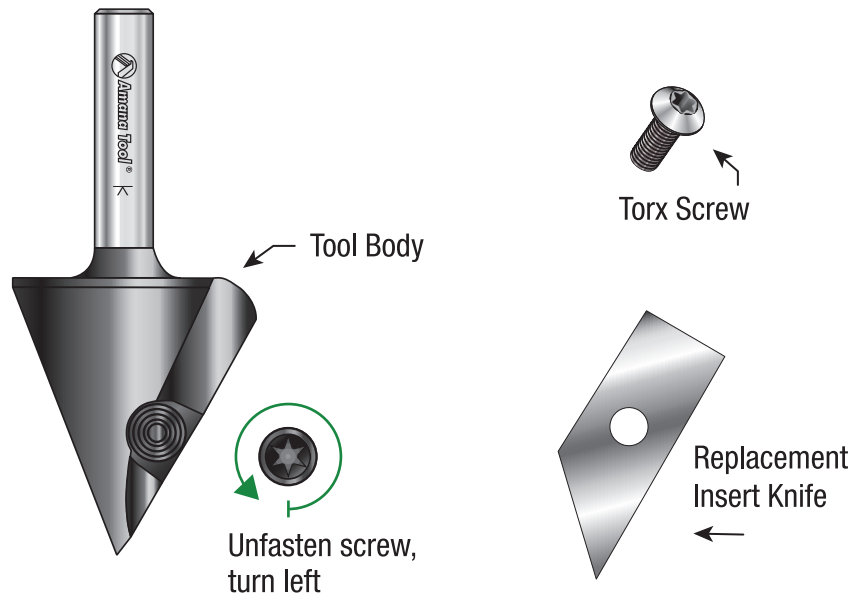
Amana Tool 60° #'s RC-1108 & RC-1148

WARNING!

For your safety, turn CNC machine off before replacing insert knife and wear leather gloves.

Correct Order of Replacing the Insert Knife

1. Ensure CNC machine is turned off.
2. Wear leather gloves.
3. Remove old insert; unfasten set screw by turning left.
4. Clean groove area, slot and thread for dust buildup.
5. Inspect screw and ensure the area is clean of dust buildup.
6. Place new insert knife and fasten screw lightly by turning right.
7. Push insert left towards slot and up towards shank.
8. Fasten screw firmly.



In one movement,
push insert
LEFT
towards body
and **UP**
towards shank

